

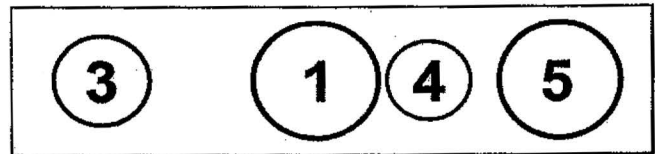
PRODUCING SPARKLING LIQUID HONEY

To get started producing extracted honey, all you need is a way to remove the wax cap from the honeycomb, a honey extractor, and storage containers. The simplest system is a cappings scratcher, honey extractor and plastic buckets. All other equipment is to make the job more efficient. Shown in the numbered circles is a system to grow into. Some intermediate steps may be appropriate for you. Our suggestion is to ask questions and plan ahead.

IDEAS FOR SMALLER HONEY PRODUCERS

Everything needed to extract honey and separate wax.

- 1 - Extractor and stand (Junior Bench - Little Wonder - Ranger)
- 2 - Hand Uncapping Knife (not shown)
- 3 - Liquidator (Uncap into - Process Wax Cappings - Warm or Liquefy Honey)
- 4 - Plastic Pails (several)
- 5 - Storage Tank and Strainer Screen (lined with strainer Cloth)



EXTRACTING AREA FOR GROWING-MIDSIZE HONEY PRODUCERS

Growing Ideas for Expanding Operations

Initial Operation

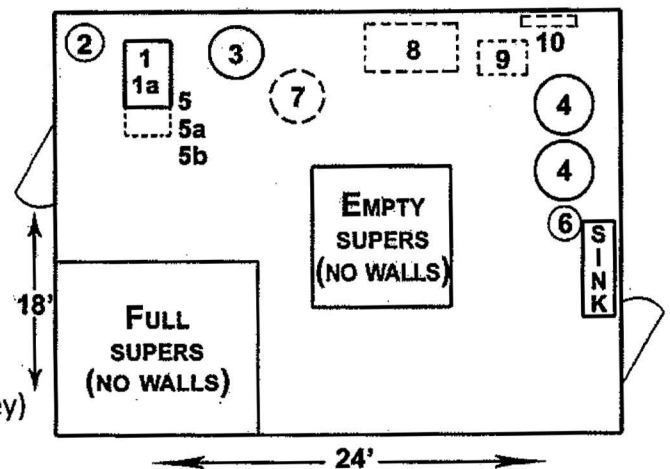
- 1 - 36" Cappings tank
- 1a - Cappings Baskets (not shown) - Hand Uncapping Knife
- 2 - Liquidator
- 3 - 12-Frame or 20-Frame Extractor
- 4 - 600# or 1000# Storage Tanks

Possible 1st Expansion

- 5 - Mini Melter
- 5a - Mini Melter Stand
- 5b - Liquefier Grid & Heater
- 6 - 300# or 550# Bottler
- 7 - Additional Extractor

Possible 2nd Expansion

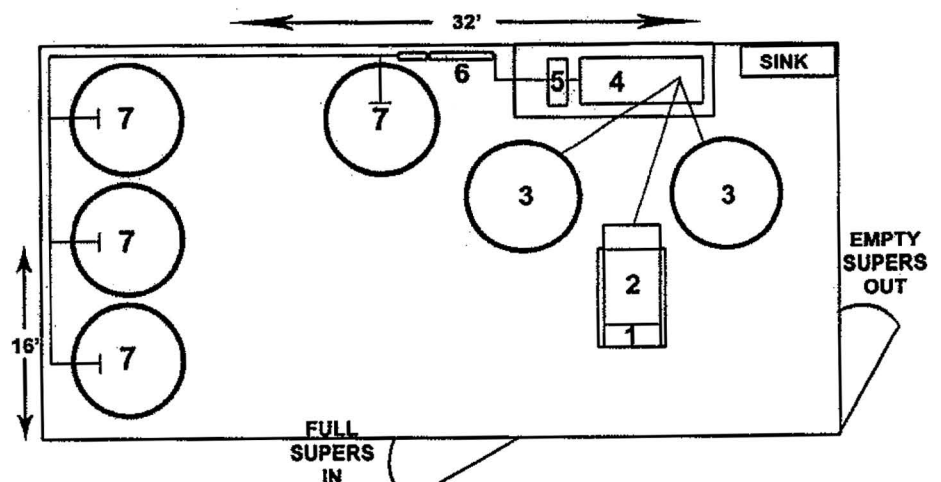
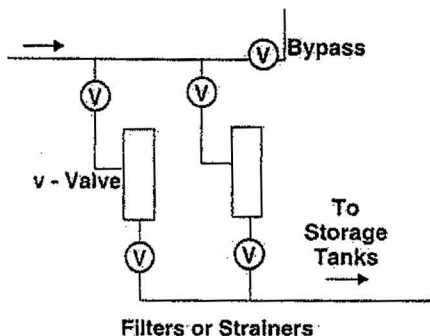
- 8 - Controller I or II (clarify and warm honey)
- 9 - Honey Pump
- 10 - Filter System



EXTRACTING AREA FOR LARGER HONEY PRODUCERS

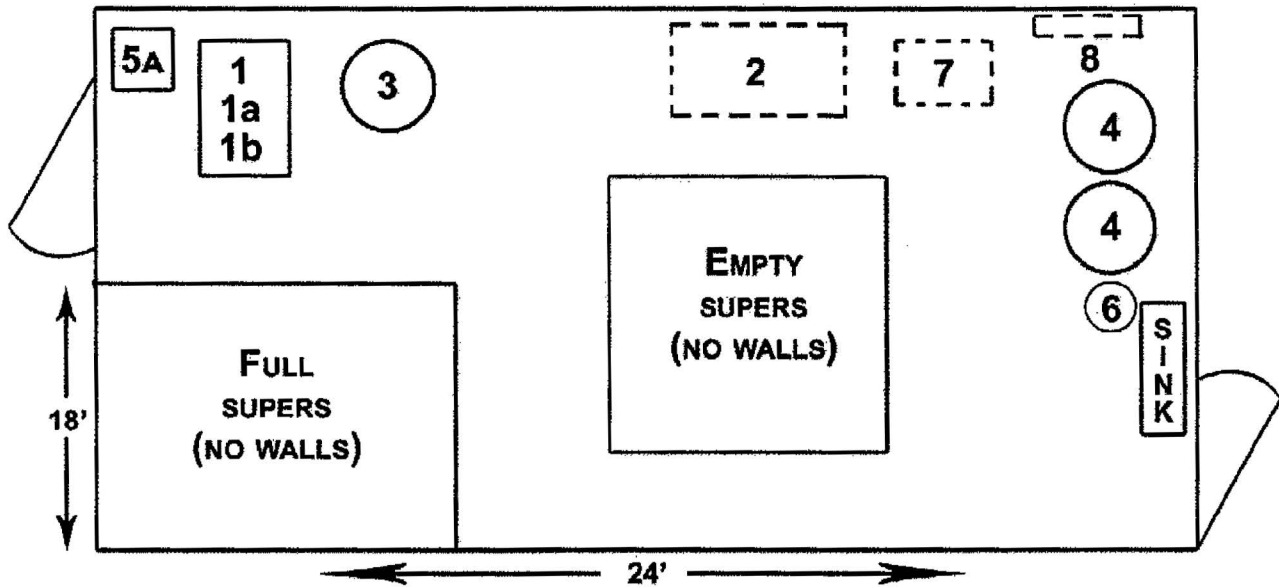
Honey Filter System
Save Time — Increase Capacity

Two honey filters plumbed properly with line valves allows you change filter bags quickly, cleanly, and efficiently without interrupting honey flow.



- 1 - Power Uncapper & Stand
- 2 - Electromelt Cappings Melter
- 3 - Honey Master or 60-Frame Extractors
- 4 - Sump Tank
- 5 - Honey Pump
- 6 - Filter system
- 7 - 3420# Storage Tanks

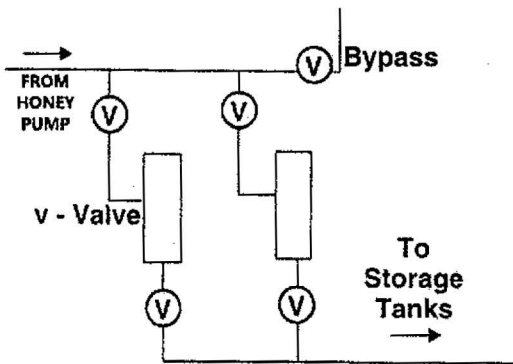
EXTRACTING AREA FOR MIDSIZE HONEY PRODUCERS



HONEY FILTER SYSTEM

Save Time – Increase Capacity

Two honey filters plumbed properly with line valves lets you change filter bags quickly, cleanly, and efficiently without interrupting honey flow.



GROWING IDEAS FOR EXPANDING OPERATIONS

Initial Operation

- 1 – M00370 36" Cappings Tank
- 1a – M00371 Cappings Baskets
- 1b – M00372 Liquefier Grid & Heater
- 2 – M00550 Controller I (clarify and warm honey)
- (not shown) – M00335 Hand Uncapping Knife
- 3 – M00440 20-frame Extractor
- (not shown) – M00444 Stand only
- 4 – M00491 600# or M00492 1000# Storage Tanks
- 5a – M005491 Mini Melter
- 6 – M00616 300# Bottler
- 7 – M00539 Honey Pump
- 8 – M00570 Filter System